

1 ELEMENTY PRZESTRZENNE

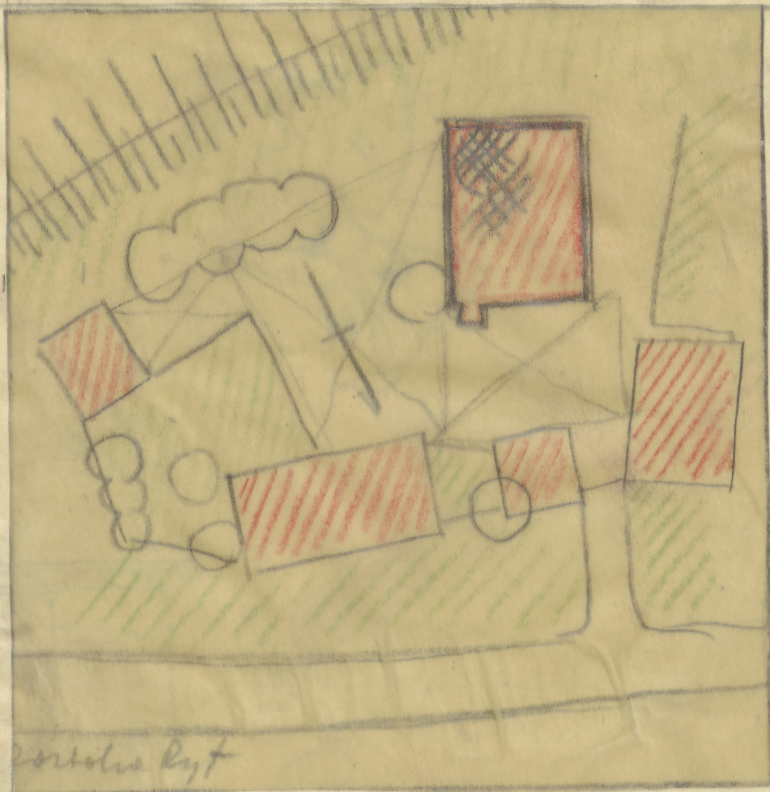
1.1 PODWÓRZA I DZIEDZINCE 1.2 PODWÓRZA ZAGRÓD WIEJSKICH

1:500 (1956) D1

Gerard

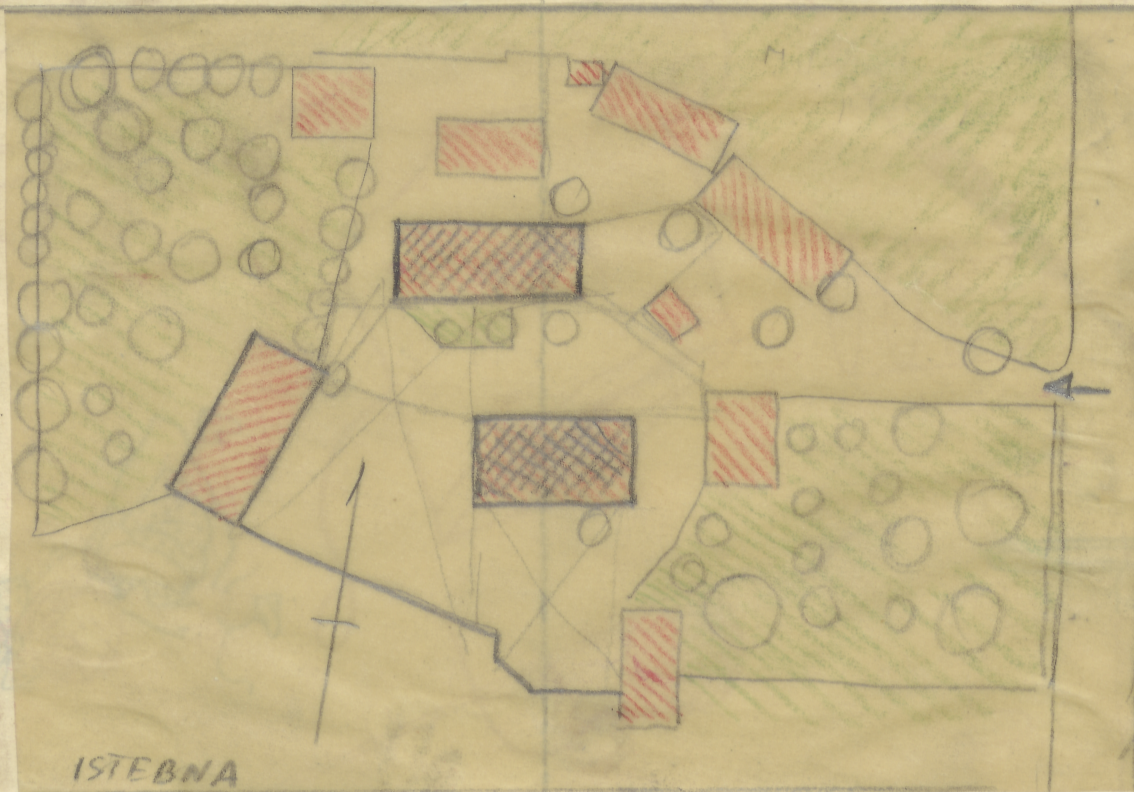
1.36.7 x 54.5 cm

I



Podwórka kąt

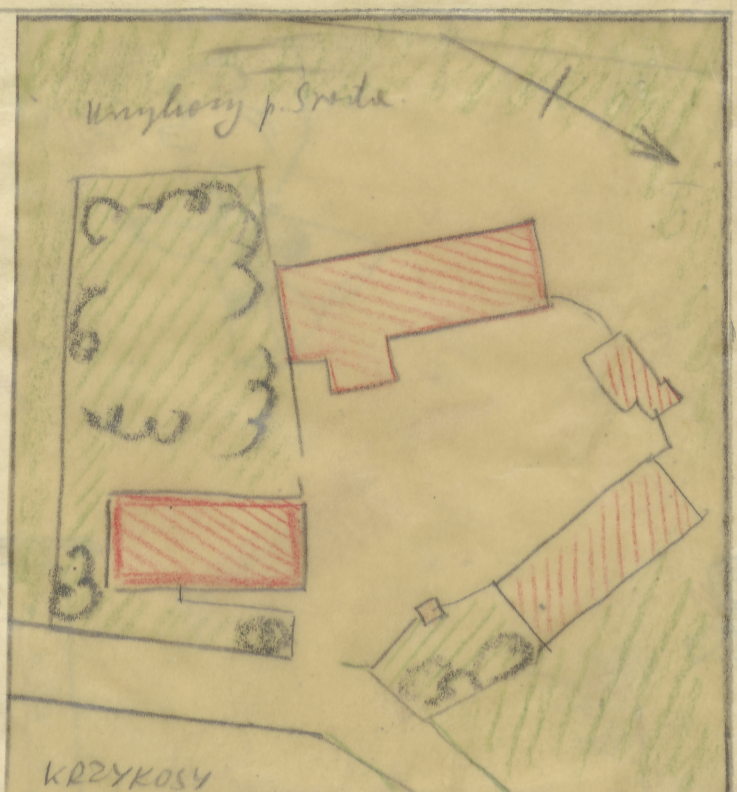
II



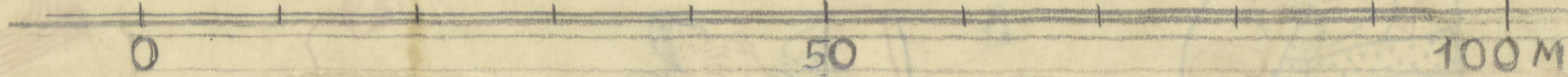
ISTEBNA

K

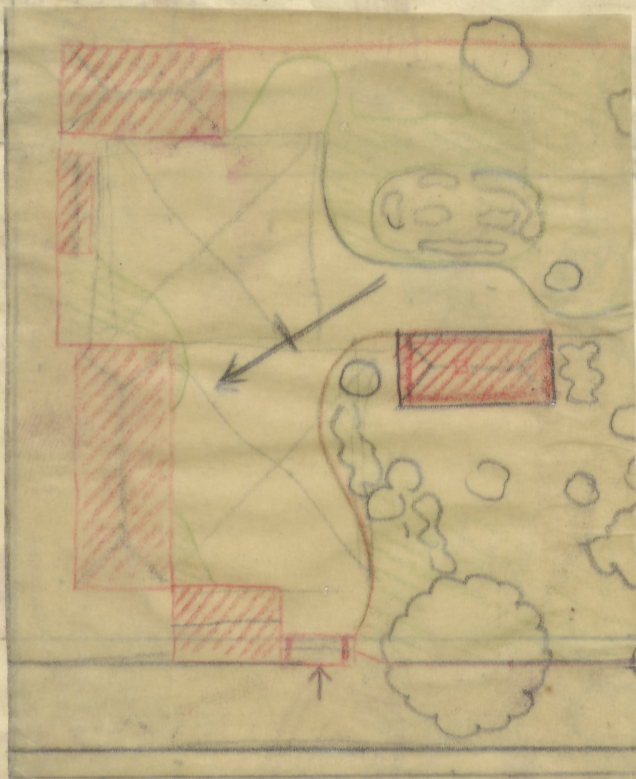
III



KRDZYKOSY

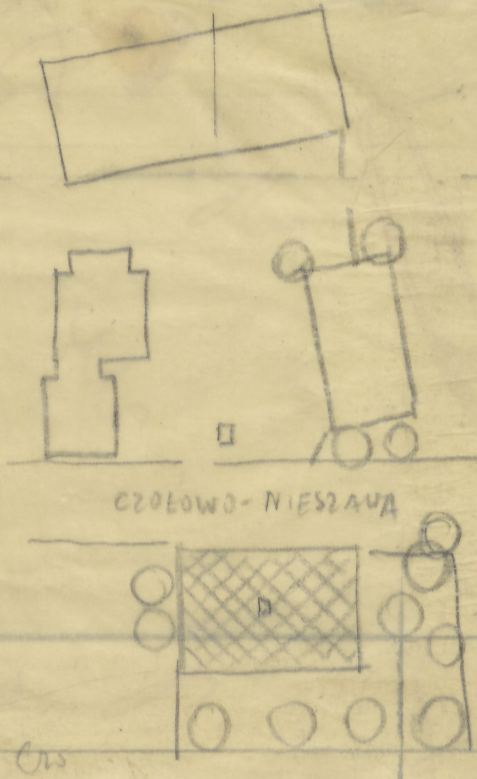


IV



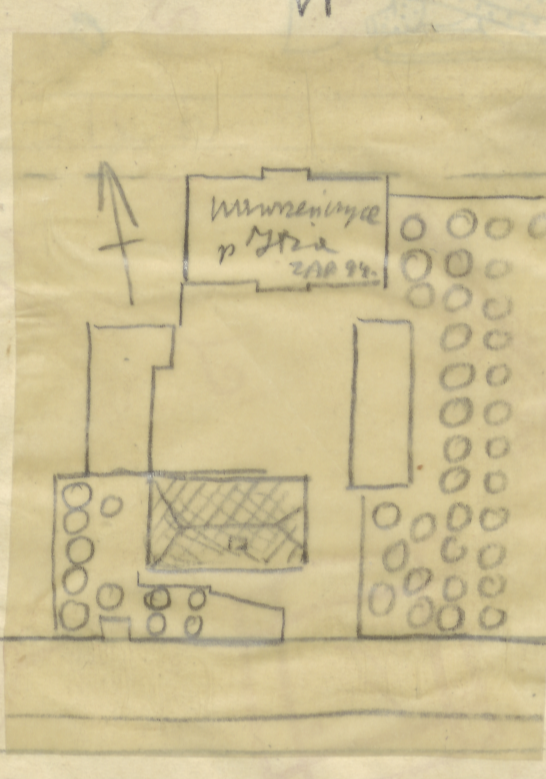
ODZ Nr imo. TC-P. 4634

V



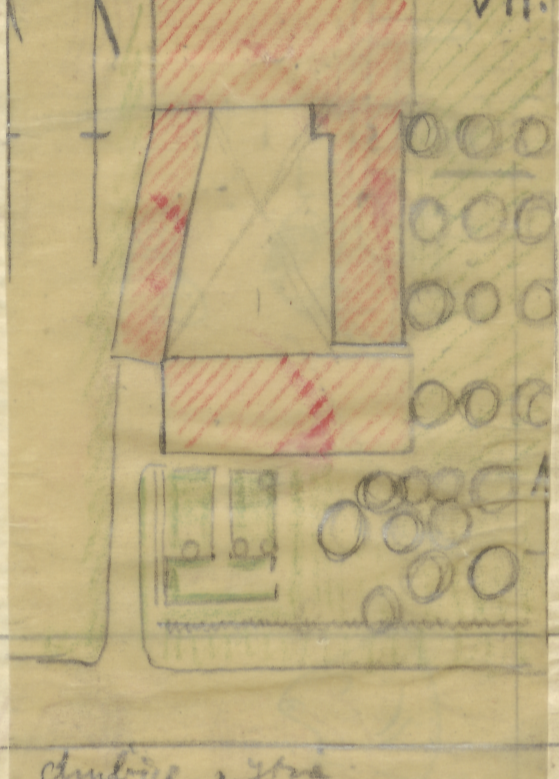
CZŁOWO-NIEŻYNA

VI



Wysokość p. 122-2 2/10 34

VII



dąbrowa, 34