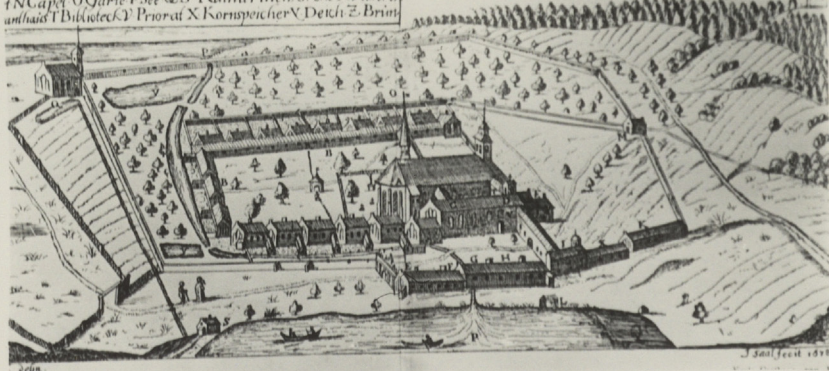


Cartusia Paradisi B^e Marie.
In Cassubia prope Gedanum Sita fundata
Anno 1382

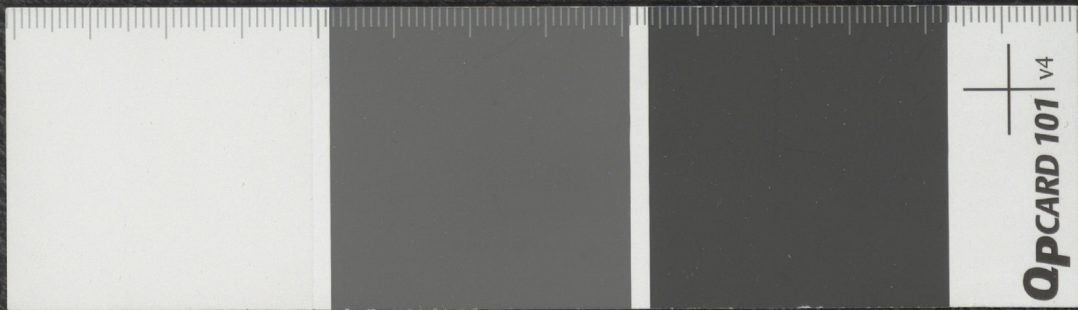
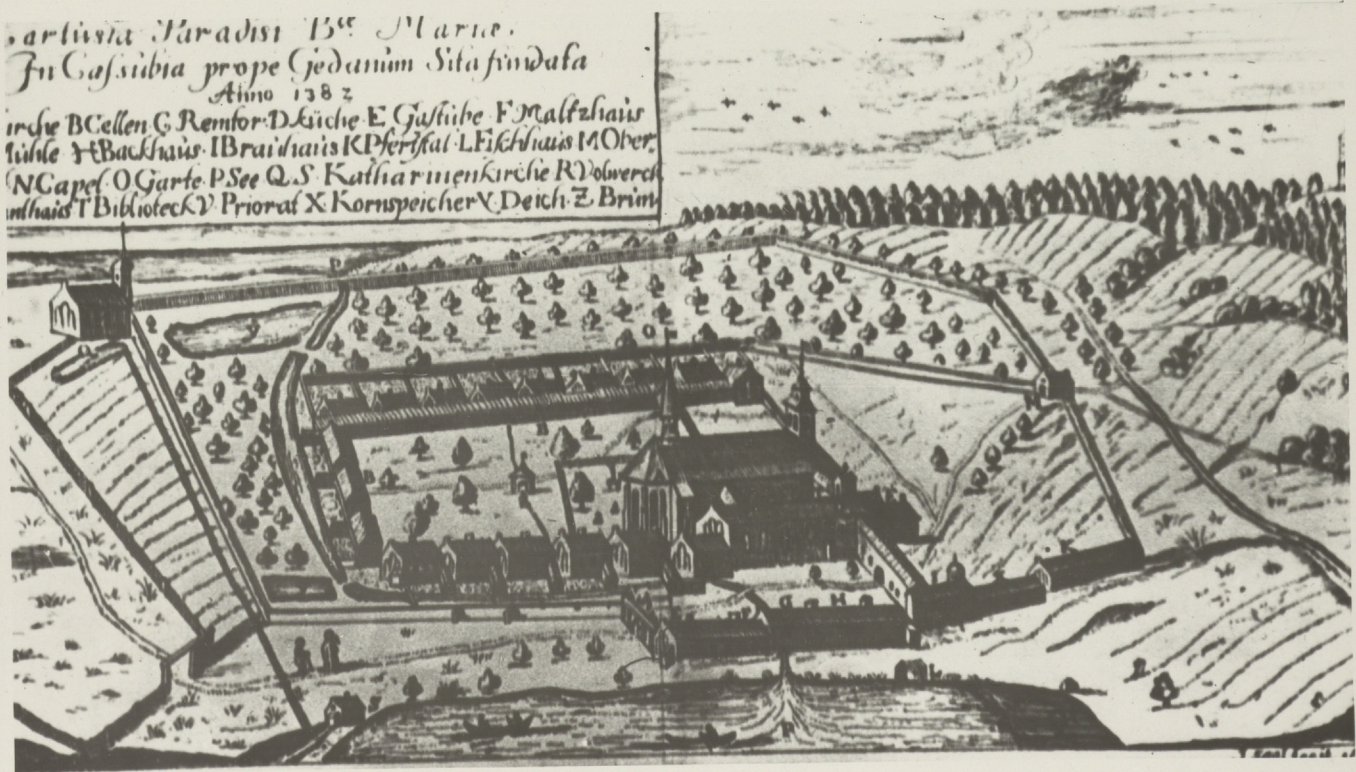
A Aellen C Rentor D Kirche E Galtube F Maltzhais
Guhle H Bachhaus I Brauhais K Pflanzl L Fischhaus M Ober
N Capel O Garten P See Q S Kathia r menforche R Oberer
antheil T Birkwiedel U Priorat X Kornspeicher Y Deich Z Brunn



Cartivsa Paradisi B^{ca} Mariae.
In Cassubia prope Gedanum Sita fundata

Anno 1382

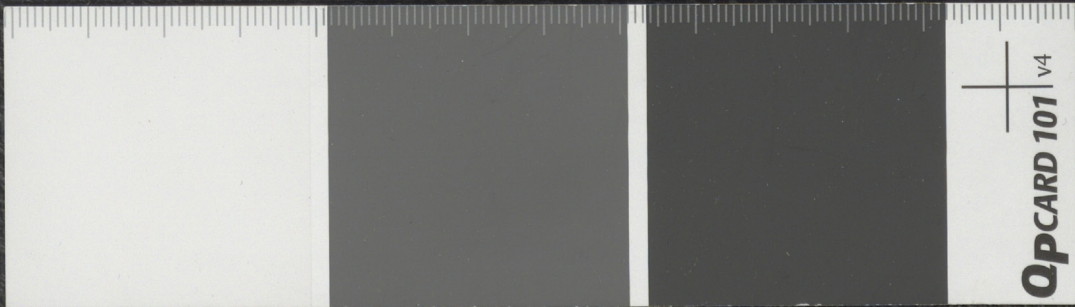
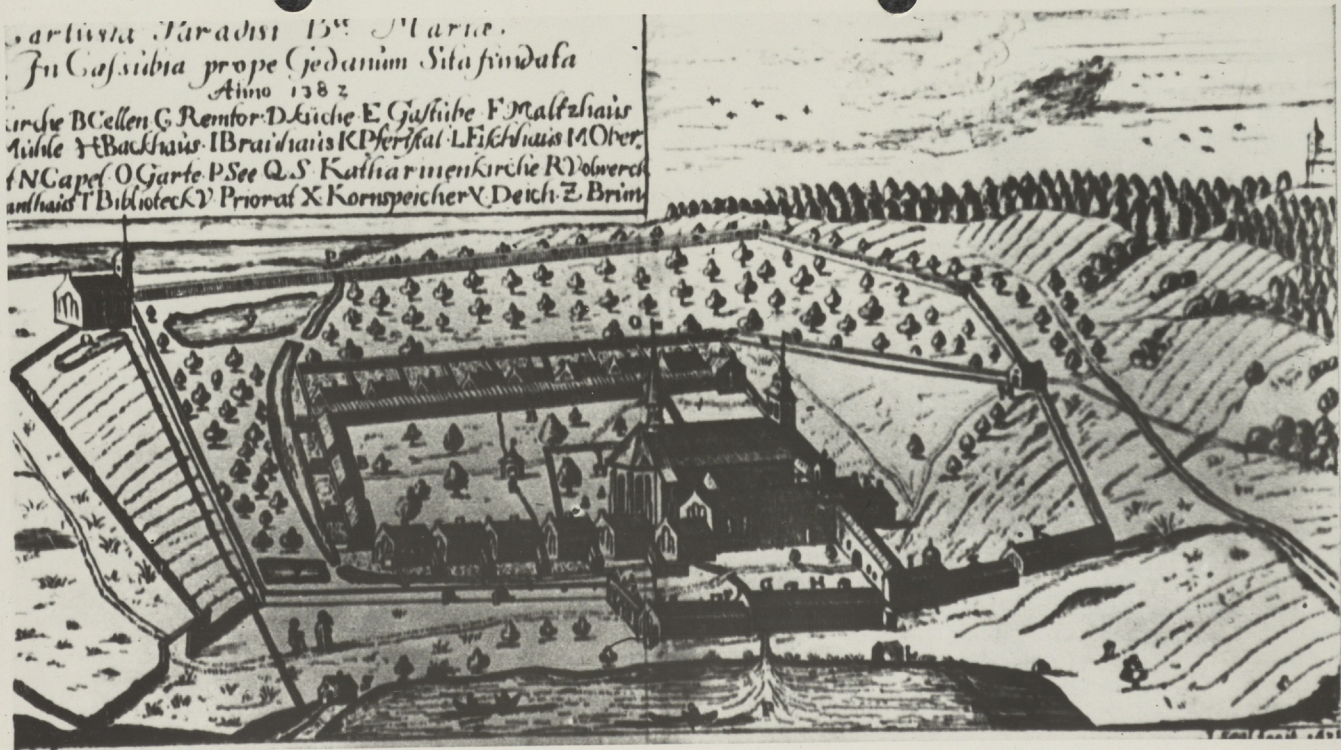
irche B Cellen C Remfor. D Küche E Gasthube F Maltzhais
Lühle H Backhais I Braihais K Pfersthal L Fickhais M Ober
N Capel O Garten P See Q S Katharinenkirche R Wolwerch
T Bibliothek V Priorat X Kornspeicher Y Deich Z Brinn



artivna Paradisi 15^{te} Martii.
In Cassibia prope Gedanum Sita fundata

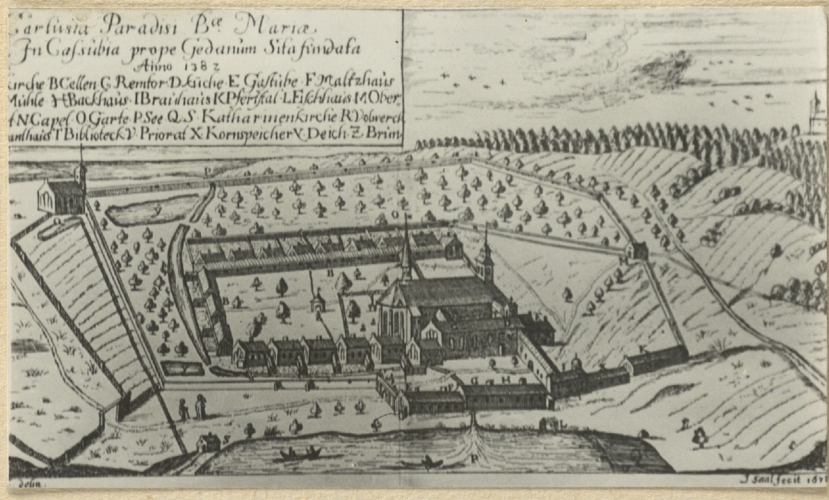
Anno 1382

Kirche BCellen G Remfor:DKirche E Galtube F Maltzhais
Wilde Y Backhaus IBrauhais KPferikal L Fichtshais M Ober
f N Capel O Garte P See Q S KatharinenKirche R Döberck
anlhais T Bibliothek V Priorat X Kornspeicher Y Deich Z Brinn

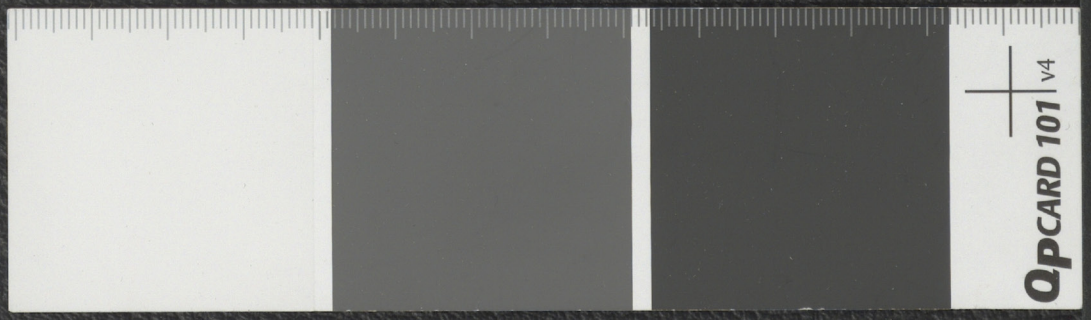


KARTUZY
1382

TC-OK-41-40

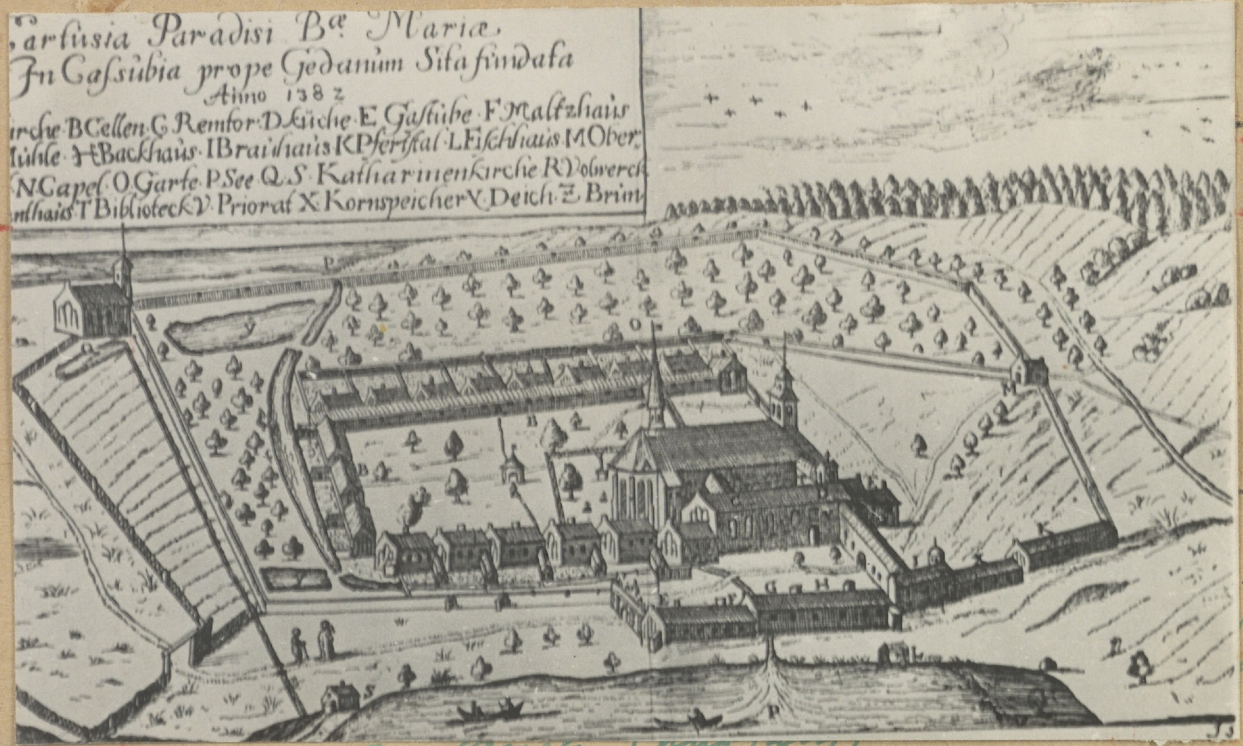


B. Kinnich. 1689.



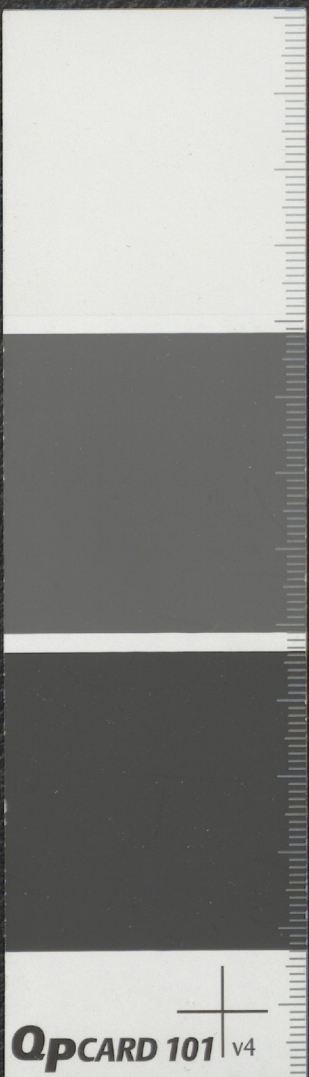
TC-OK-41-40

LOK. ZAM. KARTUZOW
1382
KARTUZY



Kartuz 1682

Handwritten notes in cursive script, including the word "Kartuz" and other illegible characters.



10. Kartweg - Kloster Kartusio.

Widuh ogiluy z r. 1678.

B. Ransich del. J. Seel fecit. 1678.

Die Bau- und Kunstdenkmäler
der Provinz Westpreussen I.
Gdańsk 1884.

29